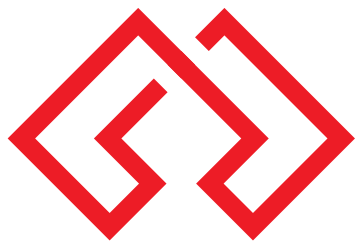
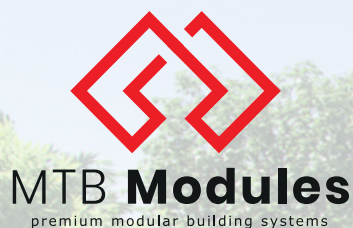

CATALOGUE

PREMIUM
MODULAR
HOUSES



MTB Modules
premium modular building systems



Ladies and Gentlemen

We are very pleased to provide you with this catalog, which is the culmination of several months of our work.

MTB Modules is a premium brand, offering modern modular building solutions. We address our offer to both retail and business customers.

Thanks to Our hard work, we have developed sales channels in many countries around the world. We are distinguished by the high quality of our materials and the ease of installation. Customers appreciate our professionalism and continuing development, and we do everything to make our company reach every corner of the Earth. We are setting a new quality in modular house systems.

We prepare an offer strictly tailored to the customer's needs, and you can see it in a specially prepared **SHOWROOM** of our company in Chojnice.

Our mission is to create a friendly, safe place to live.

Bartosz Tracz

CEO MTB MODULES

Contents

PAGE

06
08
10
12
14
16
18
20
22
24
26
28
30
32
34
36
38
40
42
44

46
48
50
52

HOUSES

MTB ONE
MTB ONE WHITE
MTB ONE PLUS
MTB ONE PLUS WHITE
MTB FOUR
MTB FOUR WHITE
MTB FIVE
MTB SIX
MTB SIX WHITE
MTB SEVEN
MTB SEVEN WHITE
MTB A
TINY HOUSE
MTB T
MTB T WHITE
MARINA MODULE
ROW HOUSE
SERIA UNIVERSAL
MOBILE HOME L
MOBILE HOME XL

FOR BUSINESS

MICRO HOTEL ROOM
HOTEL MODULE
MEDICAL MODULE

OUR WORK

MTB ONE



Parameters:

HOUSE SIZE: 35 m² with mezzanine

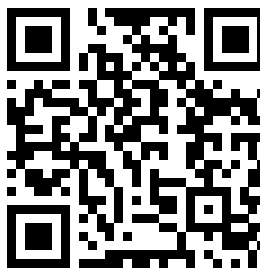
HOUSE DIMENSIONS - EXTERIOR:

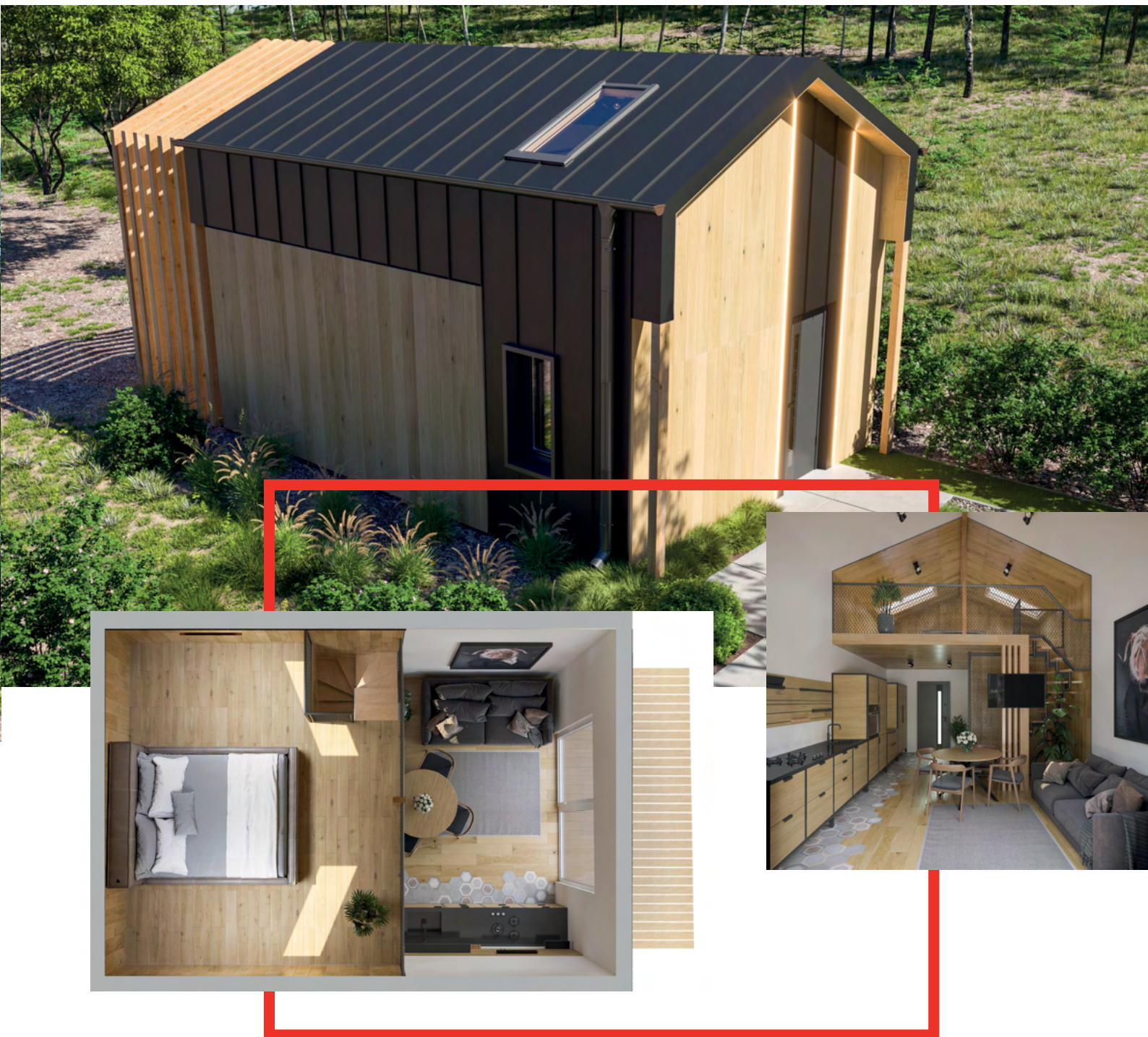
WIDTH: 4,94 m

LENGTH: 6,91 m

HEIGHT: 4,92 m

ROOF ANGLE: 18°





The **MTB One model** is a combination of elegance and functionality. It is a house with an area of **35 m²**. A large terrace window makes the entire living room filled with sunlight, and its location allows comfortable access to the garden. The house has a mezzanine floor, which can be developed into a bedroom. This will allow you to separate the living zone from the night zone, without adding additional square meters. A stylish terrace canopy is an additional option, which not only allows you to get a bit of shade on sunny days, but also adds charm and appeal. **MTB One** is a timeless model that always fits in with the atmosphere of its surroundings. It allows us to be multifunctional in a relatively small space.

MTB ONE WHITE



Parameters:

HOUSE SIZE: 35 m² with mezzanine

HOUSE DIMENSIONS - EXTERIOR:

WIDTH: 4,94 m

LENGTH: 6,91 m

HEIGHT: 4,92 m

ROOF ANGLE: 18°





The **MTB ONE WHITE** model is a year-round home. The white façade adds a chic and elegant touch. The panelling board for your own impregnation allows you to create a unique and one-of-a-kind version of the house. The built-in area is **35 m²** - so we get a spacious, open living room with the possibility of installing a kitchen and a comfortable bathroom. Additional space is provided by a mezzanine floor - of optimum height.

MTB ONE PLUS



Parameters:

HOUSE SIZE: **35 m²** with mezzanine

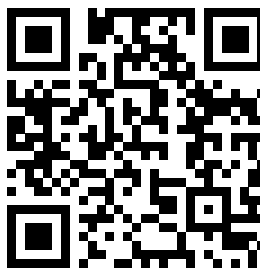
HOUSE DIMENSIONS - EXTERIOR:

WIDTH: 4,94 m

LENGTH: 6,91 m

HEIGHT: 4,92 m

ROOF ANGLE: 18°





MTB One Plus is a richer version of MTB One. The house is distinguished by large, impressive terrace windows, across the entire gable wall. They beautifully illuminate both the living room and the mezzanine. The rays of the rising sun streaming into the bedroom area will make every morning special. A large window on the first floor also serves as an additional exit to the terrace, which can be covered with a stylish pergola. It belongs to the additional options and gives an amazing effect to the whole. The house with an area of **35 m²** allows you to stylishly furnish a bathroom, a spacious living room with a functional kitchenette and a cozy bedroom. A perfectly refined staircase of our production leads upstairs.

MTB ONE PLUS WHITE



Parameters:

HOUSE SIZE: **35 m²** with mezzanine

HOUSE DIMENSIONS - EXTERIOR:

WIDTH: 4,94 m

LENGTH: 6,91 m

HEIGHT: 4,92 m

ROOF ANGLE: 18°





MTB ONE PLUS WHITE is a house that definitely boasts excellent lighting. The **35m²** house is illuminated by large, almost all-wall windows. They are extendable and allow access to the garden. To add atmosphere to the terrace, a stylish pergola made of high-quality wood is offered as an additional option. **MTB One Plus White** is distinguished from the basic version by a sensationally lit mezzanine, where we can design a cozy bedroom. On the first floor, a living room with a kitchenette will fit perfectly. This is a great solution for small spaces. Thanks to the open living room we get a modern atmosphere of the house. Following the voice of the client, the facade of the house was made of sheet metal also in white color.

MTB FOUR



Parameters:

HOUSE SIZE: **70 m²** two-storey

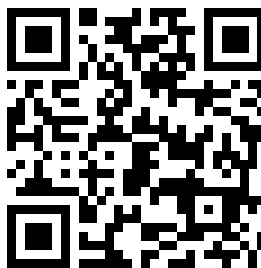
HOUSE DIMENSIONS - EXTERIOR:

WIDTH: 4,94 m

LENGTH: 6,94 m

HEIGHT: 5,40 m

ROOD ANGLE: 18°





MTB FOUR is a two-story house, with a total area of **70 m²**. It is a breath of fresh air on the market of modular houses. The area on the first floor allows space for a spacious, glazed living room with a functional kitchenette and a comfortable bathroom. Exit to the garden is made possible by large balcony doors, located in the living room. The first floor of the house allows for two or even three bedrooms and a spacious bathroom with bathtub and shower. The master bedroom has an unparalleled charm, thanks to large glass windows located on the entire wall. The top is further illuminated by two skylights. This model is very popular, due to the combination of its functionality along with its elegant style. As additional options, we offer a pergola, which will give shade on sunny days and the impression of an aesthetic whole. The model is also available in a white.

MTB **FOUR WHITE**



Parameters:

HOUSE SIZE: **70 m²** two-storey

HOUSE DIMENSIONS - EXTERIOR:

WIDTH: 4,94 m

LENGTH: 6,94 m

HEIGHT: 5,40 m

ROOD ANGLE: 18°





MTB FOUR WHITE is a two-storey house with a total area of **70 m²**. Its dimensions allow for comfortable use by the whole family. The visualisations prepared by us are an inspiration for arranging the ground floor as a utility area and the first floor as a leisure area. The large balcony windows on the front of the building not only provide excellent light for the house, but also give it a unique appearance. A pergola selected as an optional extra completes the whole perfectly.

MTB FIVE



Parameters:

HOUSE SIZE: 30 m² with mezzanine

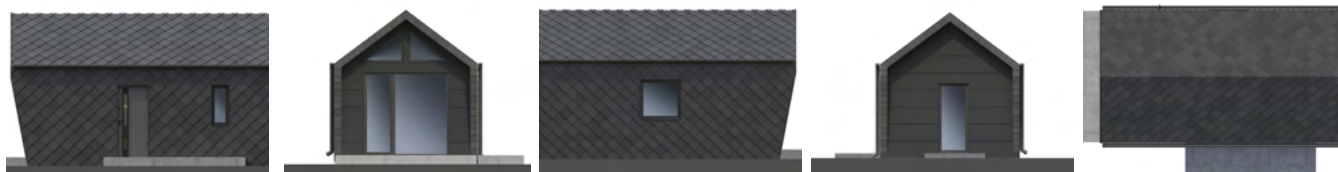
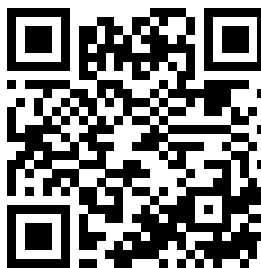
HOUSE DIMENSIONS - EXTERIOR:

WIDTH: 3,75 m

LENGTH: 7,82 m

HEIGHT: 4 m

ROOF ANGLE: 35°





MTB FIVE is a house with a small area of **30 m²**. With its unusual “diamond” elevation, it fits in with the new trends in architecture. Thoughtful layout of the rooms allows for a spacious living room with kitchenette, bathroom and a small room on the first floor. In addition, in this small model one more place has been set aside for a bedroom, located on the mezzanine. Large glazings in the living room on the area of almost the entire wall optically enlarge the space and provide an excellent view of the garden. A balcony door serves as a second entrance to the house. The small house fully provides high living and aesthetic comfort.

MTB SIX



Parameters:

HOUSE SIZE: **88 m²** two-storey

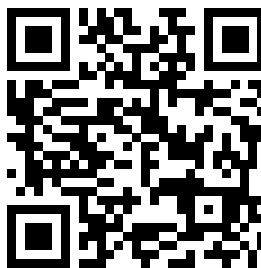
HOUSE DIMENSIONS - EXTERIOR:

WIDTH: 4,92 m

LENGTH: 10 m

HEIGHT: 5,40 m

ROOF ANGLE: 18°





MTB SIX with an area of **88 m²** is a spacious and modern house that definitely fits into today's standards. Thanks to its spaciousness and innovation, it meets the expectations of the most demanding customers. A spacious, glass-enclosed living room with a kitchenette allows for a separate relaxation area. The well-planned layout of the rooms makes it possible to develop a vestibule with a large built-in closet. On the first floor there is also space for an additional bedroom and a bathroom. The first floor of the house is divided into two bedrooms and a versatile bathroom. The house stands out from other models because of its seamed metal facade, combined with a herringbone facade board. Thus, we get a multifunctional house with a timeless look and top quality.

MTB SIX WHITE



Parameters:

HOUSE SIZE: 88 m² two-storey

HOUSE DIMENSIONS - EXTERIOR:

WIDTH: 4,92 m

LENGTH: 10 m

HEIGHT: 5,40 m

ROOF ANGLE: 18°





MTB SIX WHITE is a two-storey spacious house with a total area of **88 m²**. The white seam façade gives a modern look, while the herringbone facade board adds a chic touch to the overall design. It fits perfectly into today's standards. A spacious, glass-enclosed living room with a kitchenette allows the house to have a relaxation area. The layout of the rooms, allows the development of a vestibule with a large built-in closet. On the first floor there is also space for an additional bedroom and a bathroom. The first floor of the house is divided into two bedrooms and a versatile bathroom. A large, cozy house that will comfortably accommodate the whole family.

MTB SEVEN



Parameters:

HOUSE SIZE: **120 m²** two-storey

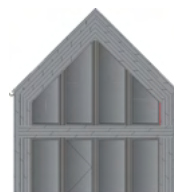
HOUSE DIMENSIONS - EXTERIOR:

WIDTH: 6,16 m

LENGTH: 10,86 m

HEIGHT: 7,13 m

ROOF ANGLE: 45°





MTB SEVEN is one of our largest models, with a total area of as much as **120 m²**. Its most distinctive feature is the large glazing, occupying almost the entire gable wall. The entire house is modeled after the very popular barn look. A large terrace door, which is an exit to the garden, conceals a spacious living room with a kitchenette. The layout of the rooms allows for 4 bedrooms and two bathrooms. The largest, glazed bedroom on the first floor gives an amazing atmosphere to this house. A spacious bathroom with the possibility of installing a bathtub and shower, and a smaller one downstairs. This is all you can get when you buy the model of your choice. The custom design of the house allows you to furnish it in any style. The facade is made of the highest quality sheet metal.

MTB SEVEN WHITE



Parameters:

HOUSE SIZE: **120 m²** two-storey

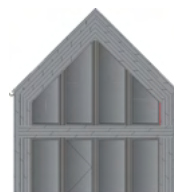
HOUSE DIMENSIONS - EXTERIOR:

WIDTH: 6,16 m

LENGTH: 10,86 m

HEIGHT: 7,13 m

ROOF ANGLE: 45°





MTB SEVEN WHITE is a revolution on the modular home market. With an area of **120 m²**, there will be room for 4 stylish bedrooms, including one on the first floor, three on the first floor. The master bedroom will be able to delight in the view, because of the glazed main wall. The rising and setting sun will give a wonderful atmosphere in this room. The glazed wall is also located on the first floor in the living room with kitchenette. The windows also serve as an additional exit, leading straight to the garden. On both floors there will be space for two comfortable bathrooms with a bathtub or shower. All according to the client's preferences. The main door will lead into the house, in anthracite color, perfectly harmonizing with the white tin facade of the house. It is behind this door that we have set aside space for a hallway with a wardrobe area. The whole house is a dream come true for those who would like to feel a whiff of rurality in the city.

MTB A



Parameters:

HOUSE SIZE: **20 m²**

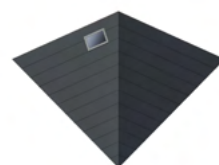
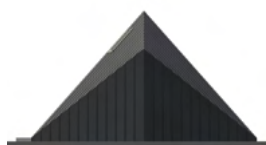
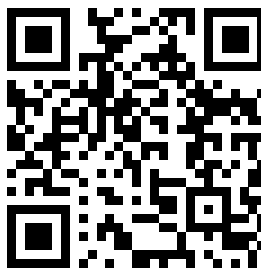
HOUSE DIMENSIONS - EXTERIOR:

WIDTH: max 9,1 m

LENGTH: max 6,9 m

HEIGHT: max 5,38 m

ROOF ANGLE: variable





MTB A is a combination of unique design and multifunctionality. Created for those who like modern solutions. It delights with its unusual shape and timeless anthracite facade. On an area of only **20 m²** we found space for a living room, kitchen, bathroom and bedrooms. Entering the main entrance, we can be charmed by the stylishly decorated living room with kitchenette. It is the heart of the house. On the first floor behind the door is a compatible bathroom with space for a shower cubicle. To move to the atmospheric bedroom, just climb the stairs leading upstairs. The most important feature of the mezzanine is the floor-to-ceiling glazed wall, which is captivating in appearance. Every morning with the sunrise and every evening with a view of the stars is something not to forget.

MTB TINY HOUSE



Parameters:

HOUSE SIZE: **33,6 m²**

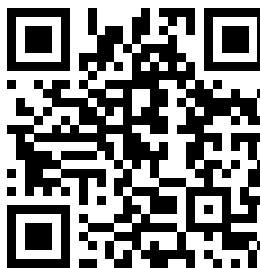
HOUSE DIMENSIONS - EXTERIOR:

WIDTH: 3,8 m

LENGTH: 10,5 m

HEIGHT: 3,2 m

ROOF ANGLE: 18°





TINY HOUSE is a modular house with a modern design and an area of **33 m²**. It will work perfectly not only as a summer house, but also as a year-round house. Fully mobile design will allow us not to stop in one place. It will be perfect for those who like change. In a small space we obtained a vestibule, a spacious living room with a kitchenette, a functional bathroom and a cozy bedroom. It is a model that also offers the highest quality interior furnishings such as : kitchenette, equipped with a bakery, refrigerator, cooker hood, induction hob and sink. The bathroom is equipped with a shower cubicle, wall cabinets, a ladder radiator, a sink, a toilet, towel hangers, and tiles on the floor and walls. The atmospheric bedroom features a double bedroom bed with a comfortable mattress, two bedside tables, a chest of drawers and a matching modern chandelier. The living room is equipped with a large closet, a TV cabinet, a sofa bed and wall-mounted shelves. Large windows located in almost every room provide excellent light to the house. The facade, partly made of sheet metal and partly made of wood, also gives it a unique look.

MTB T



Parameters:

HOUSE SIZE: **20 m²** fully equipped

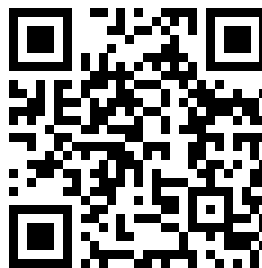
HOUSE DIMENSIONS - EXTERIOR:

WIDTH: 2,30 m

LENGTH: 5,96 m

HEIGHT: 2,54 m

ROOF ANGLE: 5°





MTB T is a small, compact house of **20 m²**. It is our first fully equipped model. It has an additional pull-out bedroom of 5 m². It is equipped with a 32 inch Samsung TV, a metal bunk bed, a double bed with a pull-out function, a TV cabinet, a large wardrobe closet, a kitchenette, linens, towels, toilet paper, a hammock, lamps, small household appliances and a fully furnished bathroom. Thus, there is no need to select additional options for this model, as it is possible to live in it immediately after transportation. Facade in anthracite color. This is a color that will always be in fashion already and will provide an elegant appearance to the building. A stylish awning gives shade on the terrace on hot sunny days. Charming design and refined every detail makes it impossible to notice how small the area is.

MTB T WHITE



Parameters:

HOUSE SIZE: **20 m²** fully equipped

HOUSE DIMENSIONS - EXTERIOR:

WIDTH: 2,30 m

LENGTH: 5,96 m

HEIGHT: 2,54 m

ROOF ANGLE: 5°





MTB T WHITE is an innovative solution in the modular home market. One of our first models of this type. It will work great both as a year-round and seasonal home. The insulated property is fully equipped and less than three hours after arrival it is already ready to move in. The **20m²** space is divided into two bedrooms, a practical kitchenette and a bathroom with a shower cubicle. The cottage's furnishings include, among others, a bunk bed with two comfortable mattresses and linens, a double pull-out bed, also with mattresses and linens, a kitchenette with a sink, a dish drainer and a cordless kettle, a complete bathroom with a shower, toilet, sink, mirror, towels and even toilet paper. A 32-inch Samsung TV is mounted on the wall. Each unit undergoes quality control, which provides customers with a guarantee of the highest quality. The classic facade of the house is made of sheet metal in white. Large windows, illuminating the entire area, add charm to MTB T White. The biggest plus of our models is mobility.

MTB MARINA MODULE



Parameters:

HOUSE SIZE: **34,86 m²**

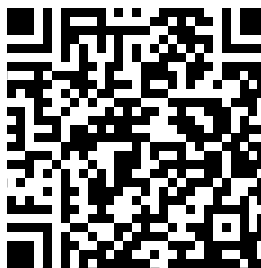
HOUSE DIMENSIONS - EXTERIOR:

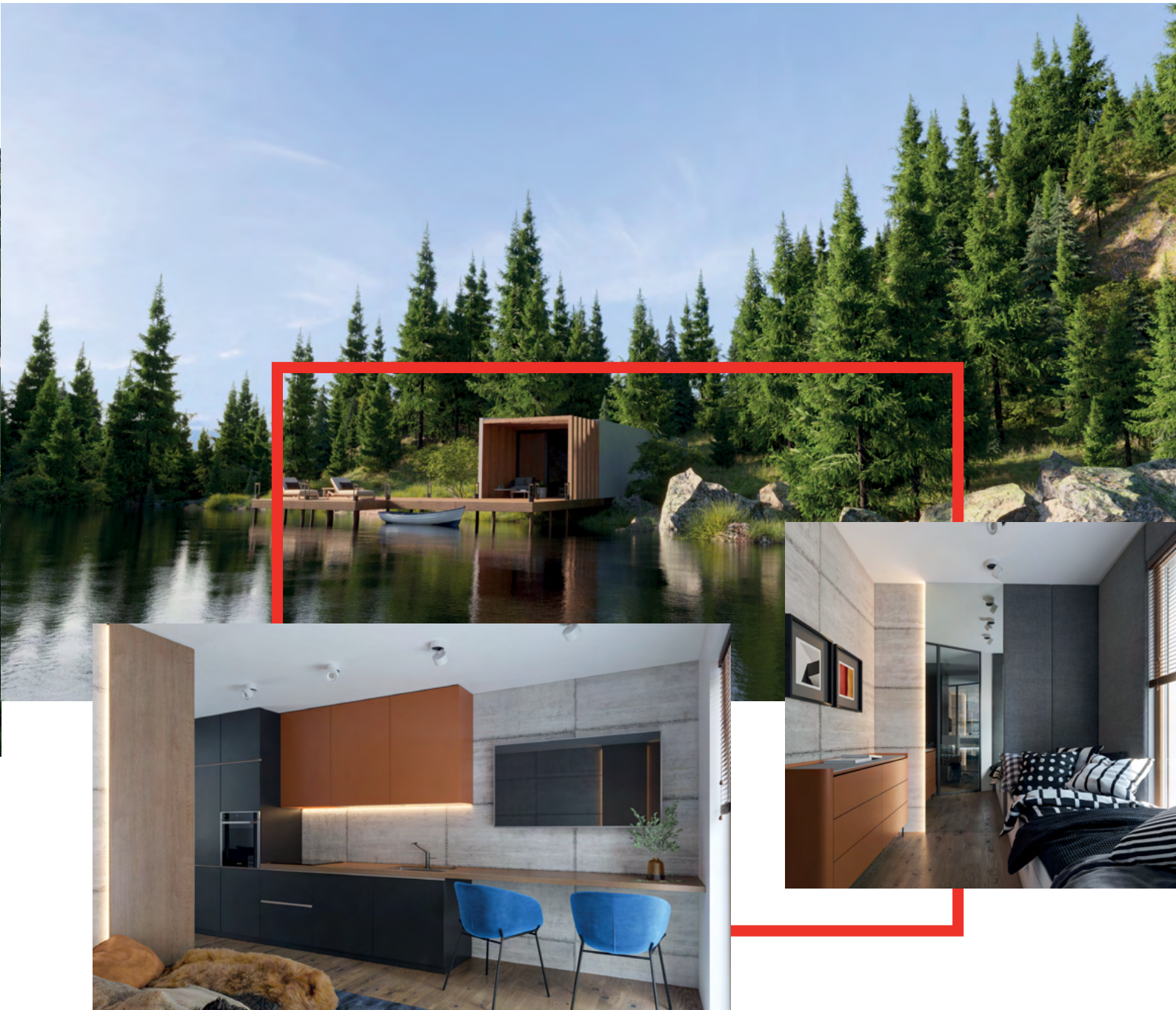
WIDTH: 4,20 m

LENGTH: 8,24 m

HEIGHT: 3,04 m

ROOF ANGLE: 5°





MARINA MODULE is a modern, year-round modular house of **35 m²**. Mobile construction, based on a steel frame in combination with Scandinavian wood creates a product of the highest quality. Despite the relatively small size in our houses, it is impossible to feel that you are in a mobile or summer building. The interior height of 250 cm, the weight and stability give comfort comparable to a top-quality hotel room. The Marina module is significantly different from Dutch cottages or wooden summer houses. Convenient layout of the rooms allows us to have space for a glazed living room with kitchenette, a comfortable bedroom area and a functional bathroom.

MTB ROW HOUSE



Parameters:

HOUSE SIZE: **106 m²**

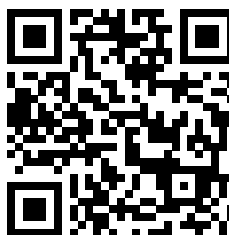
HOUSE DIMENSIONS - EXTERIOR:

WIDTH: 4,17 m

LENGTH: 13,06 m

HEIGHT: 6,40 m

ROOF ANGLE: n/d





ROW HOUSE is a spacious row house module. Mostly sold in two stories. The lower module provides convenient access to the terrace through a large balcony door, while the upper module is decorated with a balcony with an additional area of 6.5 m². Each module has an area of **53 m²**, which allows us to seamlessly develop space for a living room, kitchen, bedrooms and bathroom. By combining two modules, we can get a large 106 m² apartment, or we can split this into two separate apartments. The thickness of the ceiling is as much as 63 cm, which means that comfortable soundproofing is ensured for two separate apartments. Assembly of the terraced house takes only about two hours. The standard of the module depends on the customer's decision, we can even deliver it fully equipped. The requirement for taking the order is to set them up in at least five two-story floors.

MTB SERIA UNIVERSAL



Parameters:

HOUSE SIZE: **individual**

HOUSE DIMENSIONS - EXTERIOR:

WIDTH: individual

LENGTH: individual

HEIGHT: individual

ROOF ANGLE: n/d



UNIVERSAL SERIES is a series of buildings designed to meet your needs. The small footprint is made imperceptible by glazing almost every wall. The elegant appearance of the facade makes it fit perfectly into any environment. It is up to you how you want to use it. Sauna, garage, changing rooms or office? No problem. A universal solution for non-universal ideas.

MTB MOBILE HOME L



Parameters:

HOUSE SIZE: **40 m²**

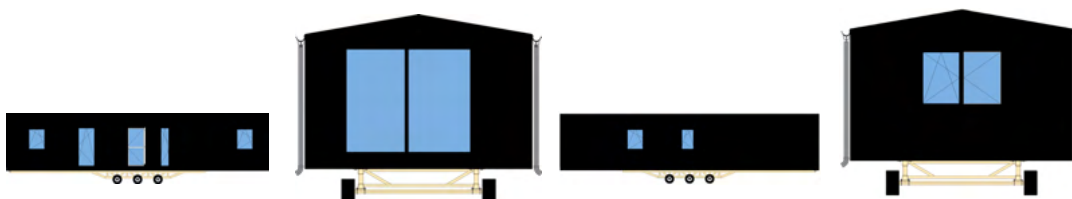
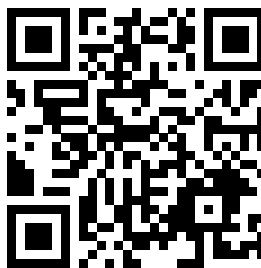
HOUSE DIMENSIONS - EXTERIOR:

WIDTH: 4 m

LENGTH: 10 m

HEIGHT: 3,55 m

ROOF ANGLE: 10°





MOBILE HOME L, commonly known as a trailer house. However, by its timeless appearance it definitely stands apart from the rest of its “brothers”. The **40 m²** mobile home surprises not only by its appearance, but also by its wellthought-out arrangement of rooms. A small space has been used for a well-lit, living room with a kitchenette, two comfortable bedrooms, providing four places to sleep, a functional vestibule and a bathroom. The building has been equipped, and includes : a kitchenette with all the most necessary appliances such as an oven, refrigerator, cooker hood, induction hob, dishwasher and sink. Bathroom with installed shower, toilet, ladder radiator and wall cabinets. The floor in it is covered with vinyl panels, and on the walls there is a monolith, imitating travertine. The master bedroom has a double bed, and the second bedroom has two single beds. The entire building is well-lit thanks to the top-quality windows located in each room.

MTB MOBILE HOME XL



Parameters:

HOUSE SIZE: **57 m²**

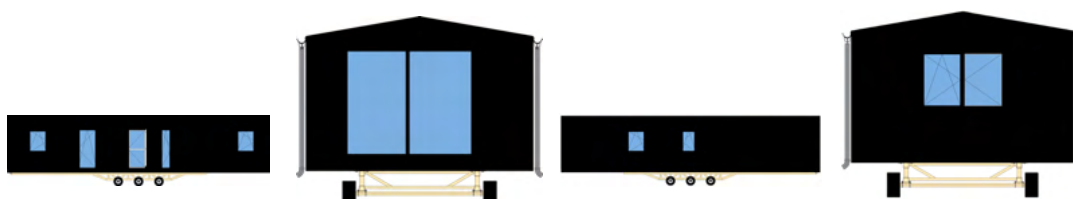
HOUSE DIMENSIONS - EXTERIOR:

WIDTH: 4,3 m

LENGTH: 13,3 m

HEIGHT: 3,6 m

ROOF ANGLE: 10°





MOBILE HOME XL is a home with a total area of **57 m²**. It stands out on the market with its spaciousness and modernist design. The house has two comfortable bedrooms equipped with beds, dressers and bedside tables. A bathroom with a shower cubicle, suspended toilet, washbasin, bathroom fittings and a washbasin cabinet with a mirror - ready for use. A large living room with a kitchenette equipped with the highest quality household appliances. All of it makes you feel like you are in a real, non-mobile home. The façade is made partly of anthracite-colored sheet metal and partly of façade wood, which gives a breath of subtlety.

Each of our mobile homes has a perfectly refined chassis that allows you to transport the object to any corner of the world.

MTB MICRO HOTEL ROOM



Parameters:

HOUSE SIZE: **15 m²**

HOUSE DIMENSIONS - EXTERIOR:

WIDTH: 2,2 m

LENGTH: 6 m

HEIGHT: 2,5 m

ROOF ANGLE: n/d





MICRO HOTEL ROOM is a small, fully equipped hotel room, with an area of **15 m²**. It meets every standard of the facility, from staff rooms to 5 stars. It is possible to put a module in multiple floors. Despite its small size, each room has room for a comfortable and cozy bedroom, a place to eat a meal and a functional bathroom.

MTB HOTEL MODULE



Parameters:

HOUSE SIZE: **28 m²**

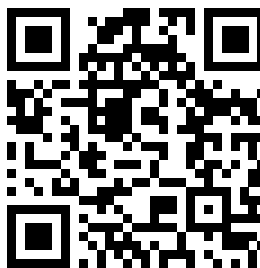
HOUSE DIMENSIONS - EXTERIOR:

WIDTH OF SINGLE MODULE: 3,74 m

LENGTH OF SINGLE MODULE: 6,94 m

HEIGHT OF SINGLE MODULE: 3,20 m

ROOF ANGLE: n/d





HOTEL MODULE as a facility of ready-made hotel room modules. They offer every standard, from simple hotel rooms, staff rooms to those five-star rooms. Our most awe-inspiring project is the Dubai room. This facility surpasses the standard of hotel star classifications. Among other things, it has been equipped with automatic opening and closing of doors and intelligent control of almost all appliances. It houses bedroom, relaxation, bathroom and kitchen areas. In addition, it provides excellent acoustic comfort. A great solution in the construction of modular hotels is a double module divided by a corridor, which connects successive sections. All materials used in the construction of our modules are of only the highest quality. The equipment is adapted to intensive use by tenants.

MTB MEDICAL MODULE



Parameters:

HOUSE SIZE: **35 m²**

HOUSE DIMENSIONS - EXTERIOR:

WIDTH: 4,00m

LENGTH: 9,51m

HEIGHT: 3,19m

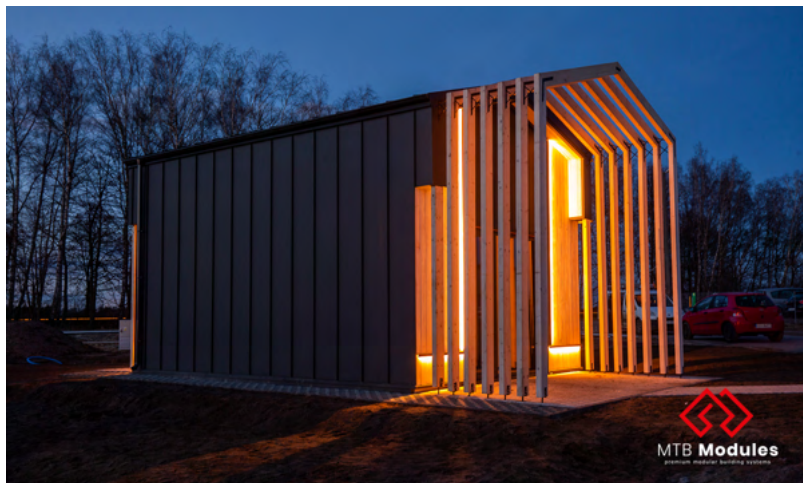
ROOF ANGLE: n/d



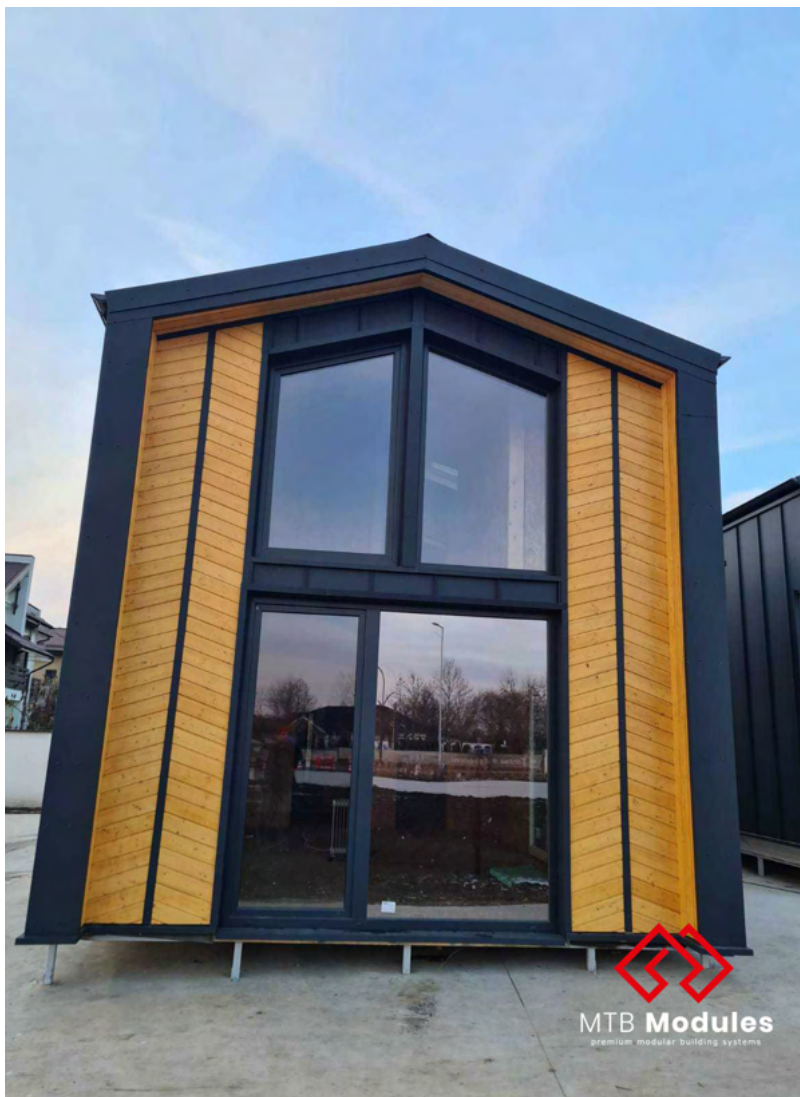


MEDICAL MODULE is a module that was created to meet the needs of the beginning of the pandemic and has fulfilled its task 100%. Certified. The offered model meets all the standards of a medical facility and is fireproof. The module was insulated by us, so its heat transmittance is relatively low. The water system is installed in the walls of the building with the possibility of heating water, through an electric heater. The facility is equipped with two ramps that allow wheelchairs to move around. Installation of the entire facility takes an average of 60 minutes. It has a pre-programmed voice information system, which operates unmanned once the module is installed at the target site. Entrance to the building is controlled according to the management system.

MTB OUR WORK

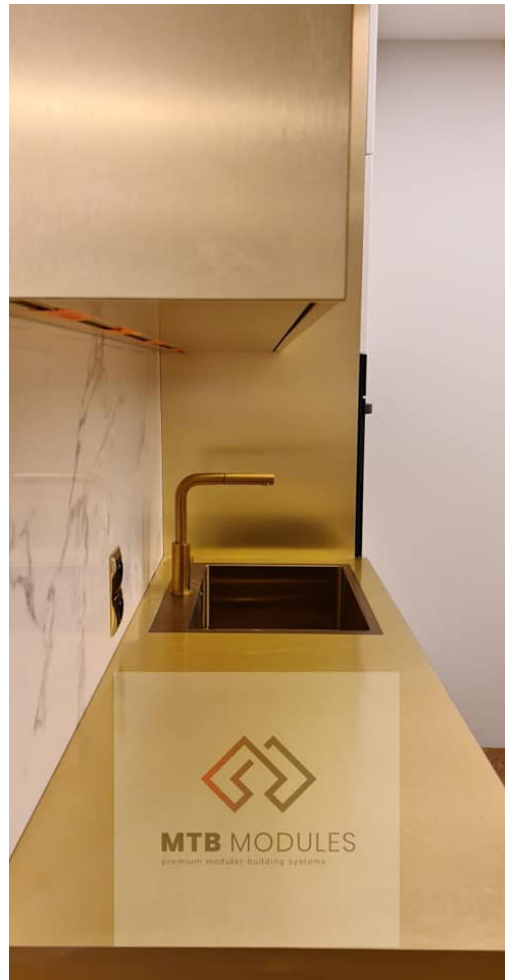
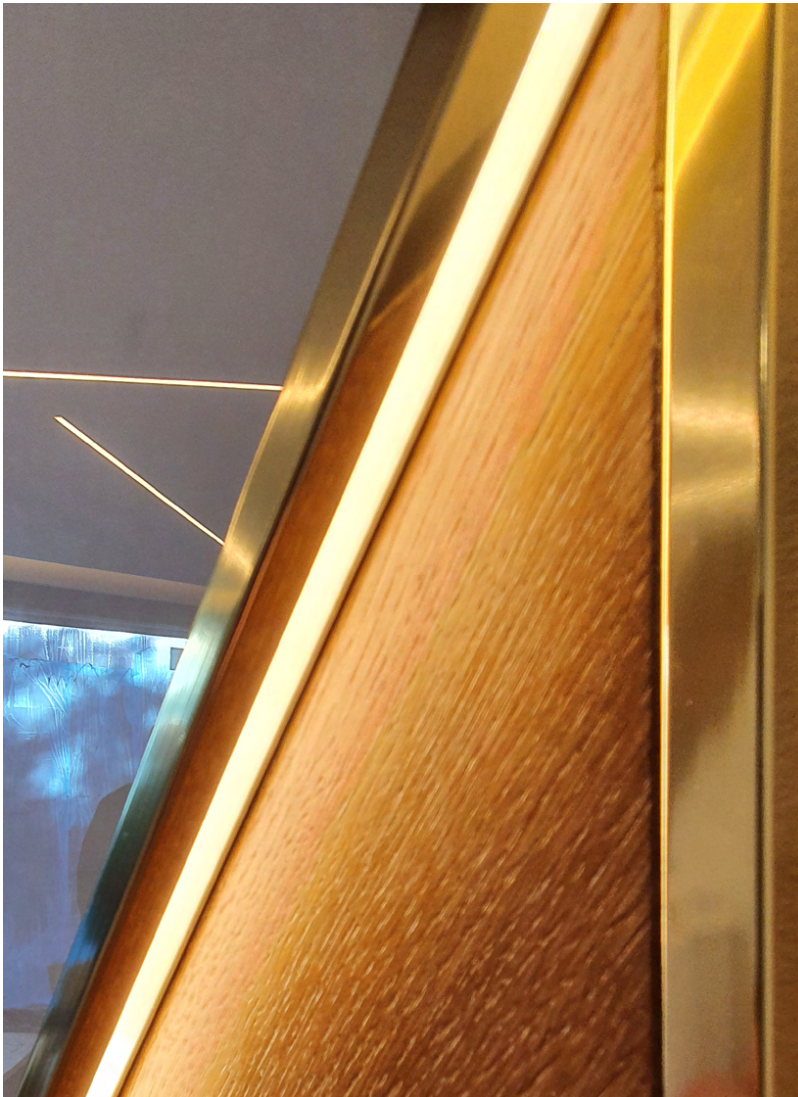


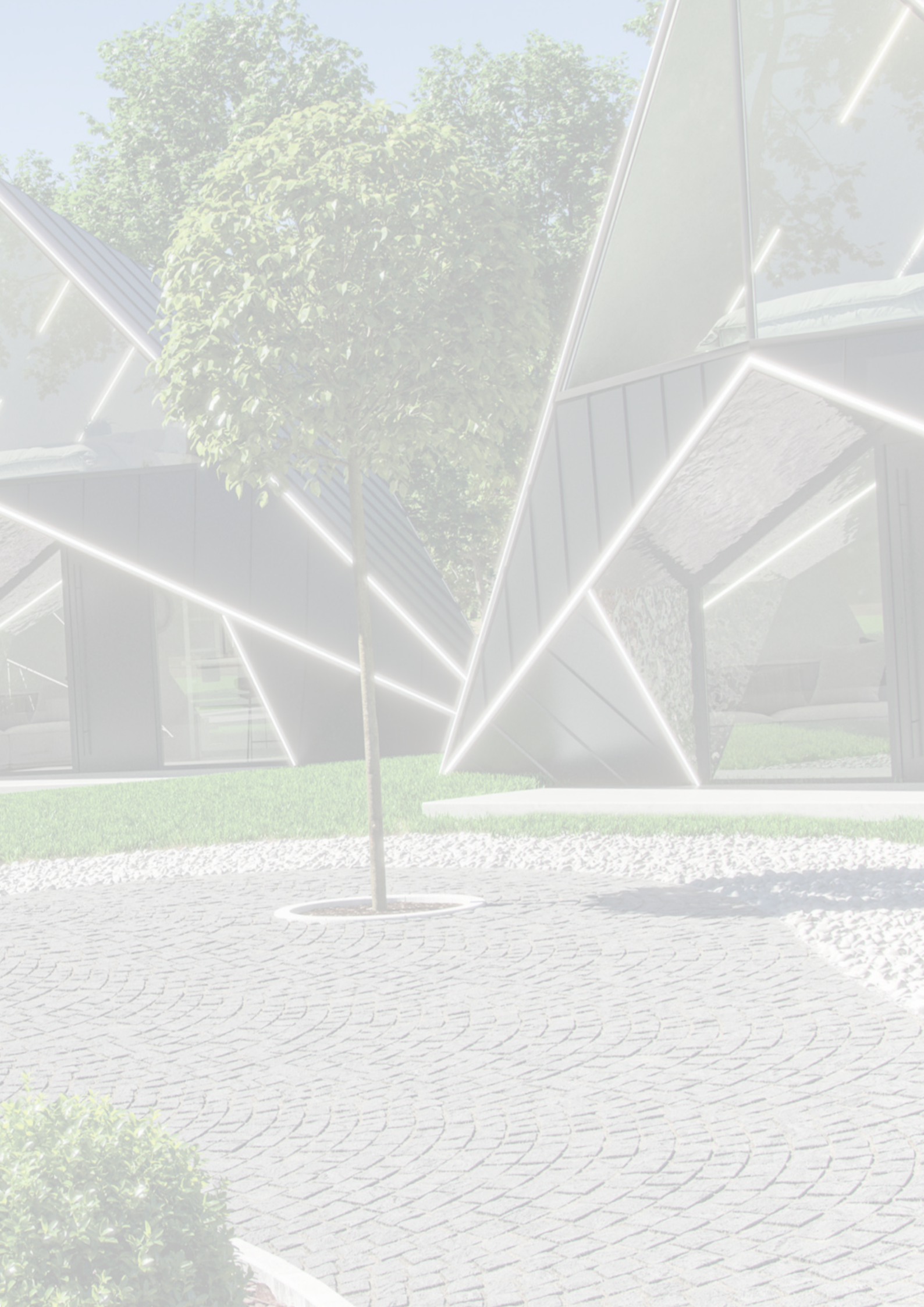


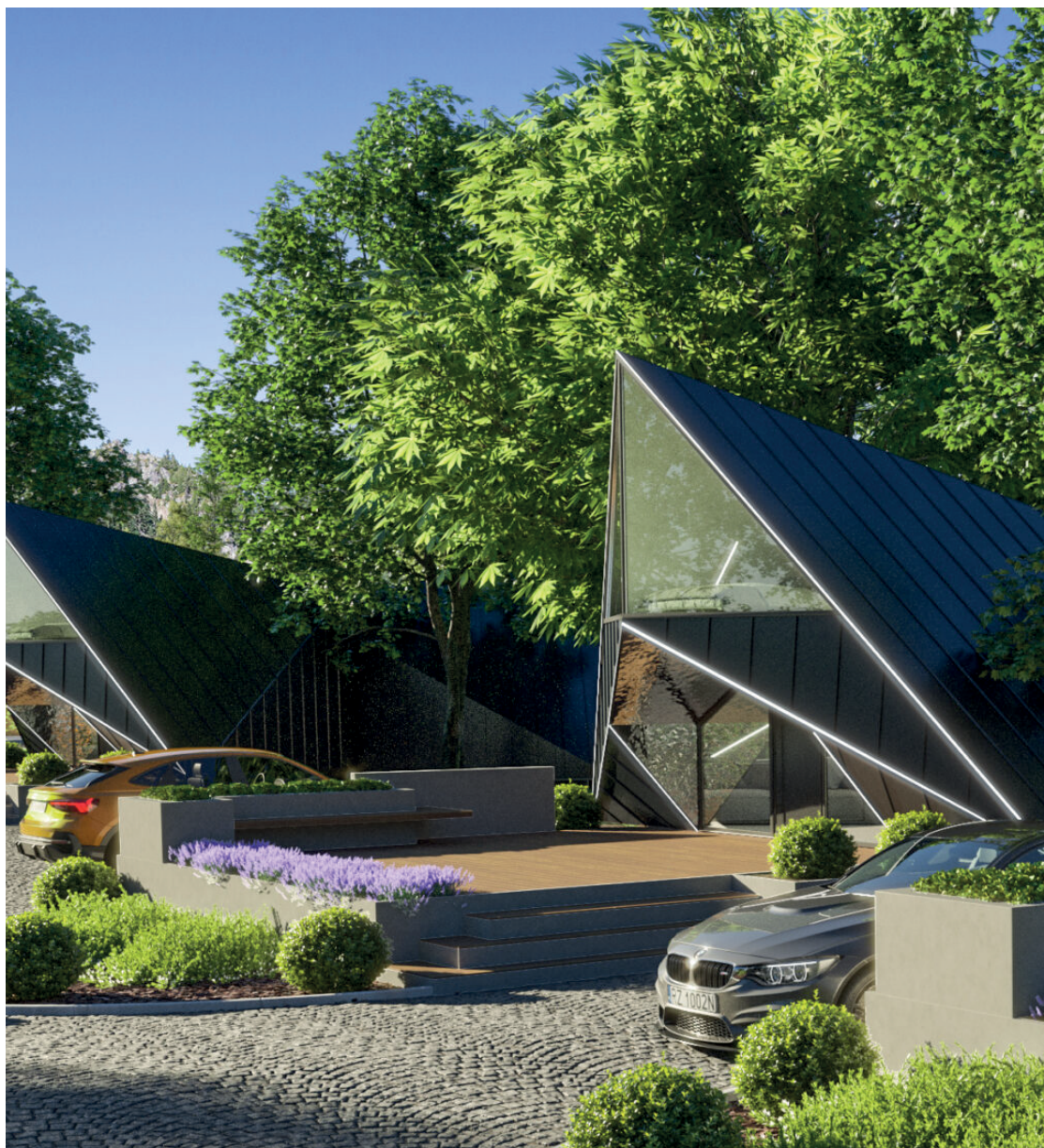












MTB MODULES SP. Z O.O.

89-600 CHOJNICE
UL. ZAMIEŚCIE 9
NIP 5552127830

WWW.MTBMODULES.COM